



Cable ID: UTP-0.51.CCA

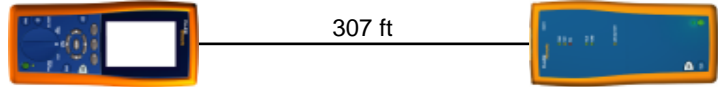
Date / Time: 08/03/2023 03:21:57 PM
Headroom 0.3 dB (NEXT 36-45)
Test Limit: TIA Cat 5e Channel
 Cable Type: Cat 5 UTP
 NVP: 69.0%

Operator: HYP
 Software Version: 2.7400
 Limits Version: 1.9300
 Calibration Date:
 Main (Tester): 08/27/2014
 Remote (Tester): 08/27/2014

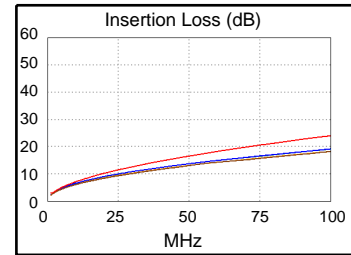
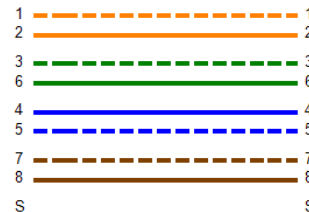
Test Summary: PASS

Model: DTX-1800
 Main S/N: 2800045
 Remote S/N: 2800046
 Main Adapter: DTX-CHA002
 Remote Adapter: DTX-CHA002

Length (ft), Limit 328	[Pair 12]	307
Prop. Delay (ns), Limit 555	[Pair 45]	469
Delay Skew (ns), Limit 50	[Pair 45]	16
Resistance (ohms)	[Pair 12]	28.0
Insertion Loss Margin (dB)	[Pair 36]	4.9
Frequency (MHz)	[Pair 36]	100.0
Limit (dB)	[Pair 36]	24.0

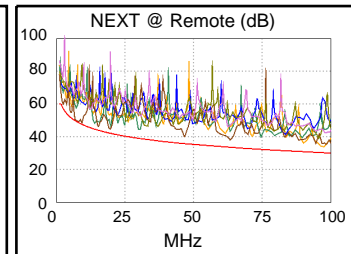
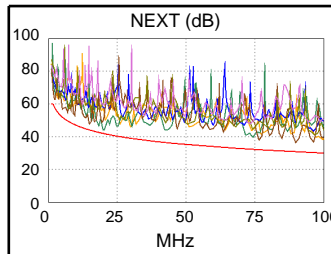


Wire Map (T568B)
PASS

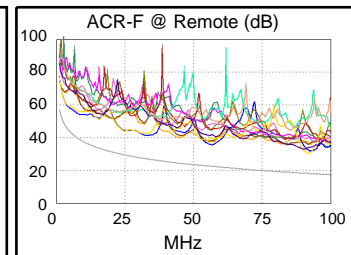
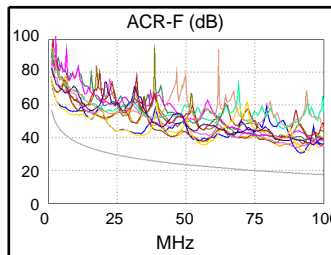


Worst Case Margin Worst Case Value

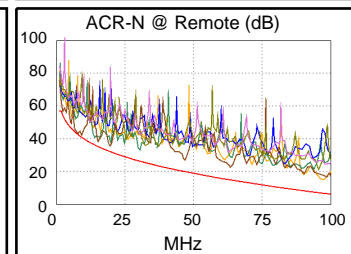
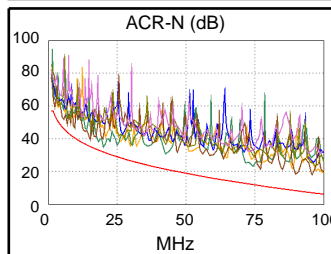
PASS	MAIN	SR	MAIN	SR
Worst Pair	12-45	36-45	36-45	12-36
NEXT (dB)	1.9	0.3*	5.0	3.2
Freq. (MHz)	19.9	7.0	90.0	97.0
Limit (dB)	42.0	49.6	30.9	30.3
Worst Pair	45	45	36	36
PS NEXT (dB)	3.8	2.6	7.7	4.0
Freq. (MHz)	19.8	7.0	96.3	97.0
Limit (dB)	39.1	46.6	27.4	27.3



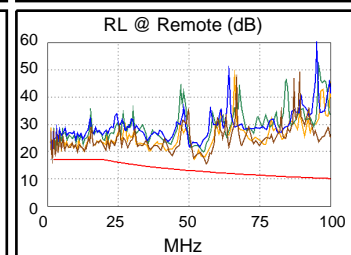
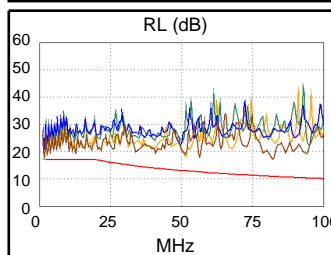
PASS	MAIN	SR	MAIN	SR
Worst Pair	12-78	78-12	12-78	78-12
ACR-F (dB)	12.2	12.0	12.2	12.0
Freq. (MHz)	92.0	92.0	92.0	92.0
Limit (dB)	18.1	18.1	18.1	18.1
Worst Pair	78	12	78	12
PS ACR-F (dB)	13.9	13.7	13.9	13.7
Freq. (MHz)	91.5	92.0	91.5	92.0
Limit (dB)	15.2	15.1	15.2	15.1



N/A	MAIN	SR	MAIN	SR
Worst Pair	12-45	36-45	36-45	12-36
ACR-N (dB)	3.0	0.8	9.6	8.0
Freq. (MHz)	19.9	6.9	90.0	97.0
Limit (dB)	31.9	43.8	8.2	6.7
Worst Pair	45	45	36	36
PS ACR-N (dB)	4.9	3.1	13.1	8.8
Freq. (MHz)	19.9	6.9	99.8	97.0
Limit (dB)	28.9	40.8	3.1	3.7



PASS	MAIN	SR	MAIN	SR
Worst Pair	78	78	78	78
RL (dB)	2.1	1.9	6.2	3.0
Freq. (MHz)	2.6	2.6	82.0	56.0
Limit (dB)	17.0	17.0	10.9	12.5



Compliant Network Standards:
 10BASE-T 100BASE-TX 100BASE-T4
 1000BASE-T ATM-25 ATM-51
 ATM-155 100VG-AnyLan TR-4
 TR-16 Active TR-16 Passive

* Measurement is within the accuracy limits of the instrument.